



Dialysis

WHITEWATER



Caring about water since 1932

About Whitewater



Dialysate is comprised of up to 99% of purified water, generated by hercopur reverse osmosis of perfect quality. Specialised, energy-efficient, low-pressure modules ensure maximum hygienic safety. Permeate that has not been used is recycled in order to reduce operating costs.

Twin pass for maximum safety. Our twin pass reverse osmosis systems guarantee maximum safety and premium-quality purified water thanks to the use of two water treatment systems arranged in series.

Excellent operational reliability is also ensured as both systems can be run separately without interruptions during operation.

Sustainable Solutions

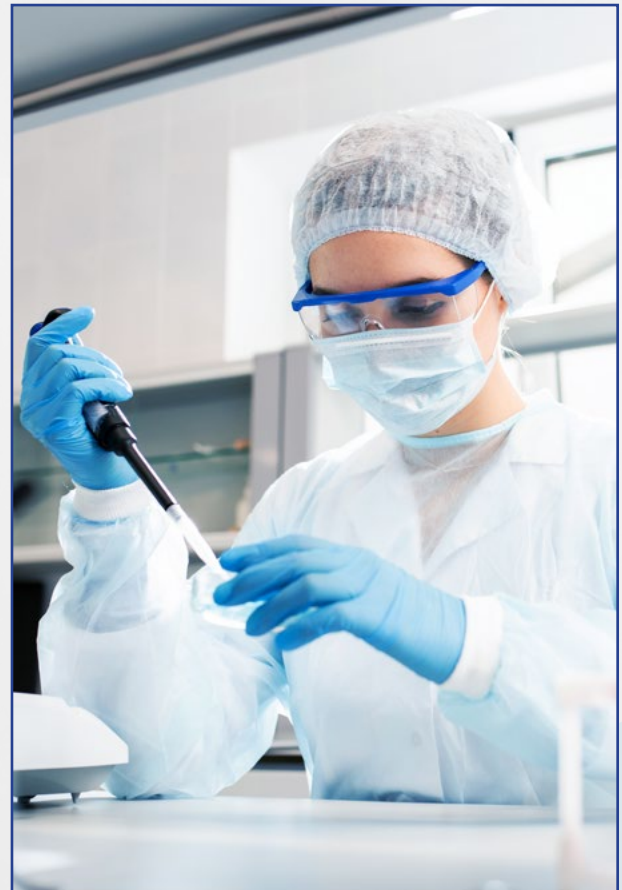
- Constructed to operate with constant circulation with continuous-flow membrane modules and continuous flow sampling valves at the beginning and end of the ring main loop
- User-friendly HMI PLC with complete graphical display
- Improves the quality of the water and extends the service life of the membranes
- Sequential arrangement of thin-film spiral membrane modules with tangential flow and vortex action to prevent deposits on the membrane surface
- Additional periodic rinse programmes (water flush, permeate rinsing) to clean the membrane surface
- Robust, long-lasting stainless steel tubing



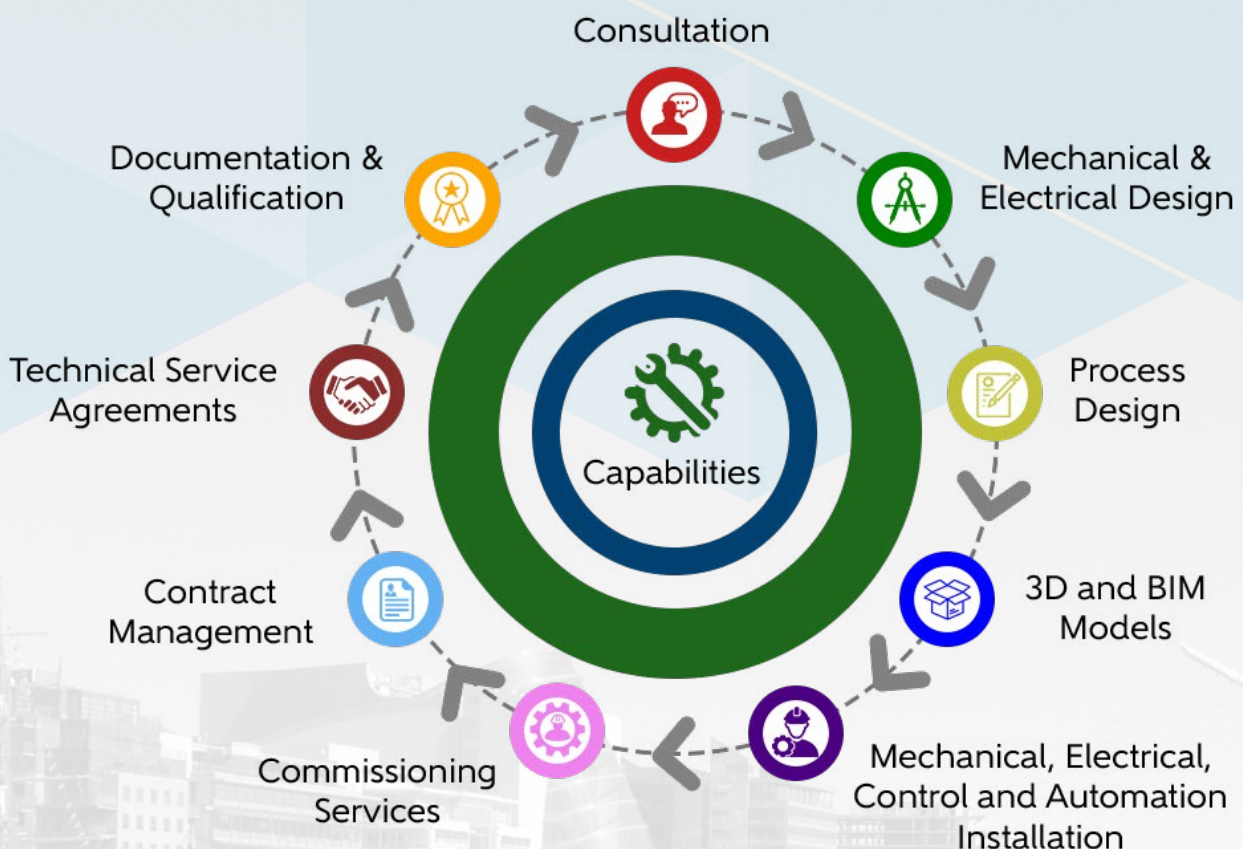
Benefits of Sustainability

As the industry searches for ways to solve to its water related challenges, Whitewater utilises its combined expertise in water treatment systems, water chemistry and plant operations to develop systems that address these challenges. Our key benefits are:

- **Up to 48% in energy savings**
- **88% reduction in drain water**
- **Chemical free design**
- **Water usage hierarchy design**
- **100% of blow down water for reuse**
- **20% less footprint requirement in plantrooms**
- **Increased CoC with 50% reduction in slowdown frequency**



Our Capabilities





Contact us for a review of your current system and to find out how we can deliver improved performance, sustainable energy, water and cost savings, and help you reduce your CO2 footprint.



Head Office

Whitewater House,
Boghall Road, Bray, Co. Wicklow,
Republic of Ireland, A98 E097
P. +353 1 276 8468
E. info@whitewatercare.com
www.whitewatercare.com

UK Office

Innovation House,
39 Mark Road, Hemel Hempstead
United Kingdom, HP2 7DN
P. +44 1442 957877
E. info@whitewatercare.com
www.whitewatercare.com



Design



Install



Service